

# THE PINEAPPLE CHRONICLES

An Original TV Series  
by Joel McElvaney





# LOGLINE

An overworked, sexually-frustrated wife convinces her reluctant husband to explore the bizarre, often hilarious world of swinging in order to stave off marital boredom and save their marriage.





“A nuanced and interesting character-driven story that is fueled by its tight dialogue and unique situation.”

**--WeScreenplay**

# PRIMARY CHARACTERS

CHRISTY



Thirty-something nurse. Outwardly confident but basically insecure. Frustrated by the routine and lack of intimacy in her and Sean's post-baby sex life. She initiates talk of swinging, but by the end of season she's rethinking it.

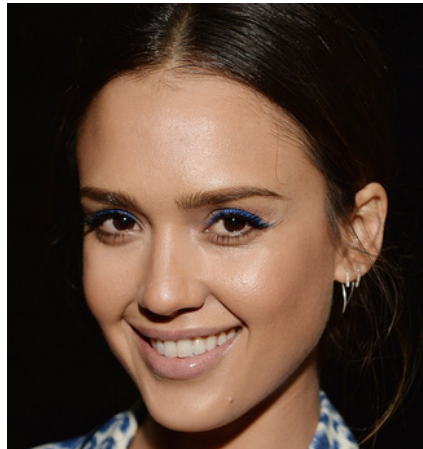
SEAN



Thirty-something college professor. Self-involved introvert who is initially apprehensive about swinging but who has bought in by season's end.

# SECONDARY CHARACTERS

NISHA



Christy's beautiful best friend and co-worker at the hospital. Her concern about her husband's cheating triggers fears in Christy.

DAVID



Nisha's lawyer husband who works long hours and may be cheating on Nisha.

JANEY



Sean and Christy's precocious and direct four year-old daughter.



# SECONDARY CHARACTERS

MEG



Christy's twenty-something lesbian sister who encourages Christy to explore swinging.

CURTIS



A serious-minded but understanding department chair. Sean's boss and mentor at the university.

SKYLAR



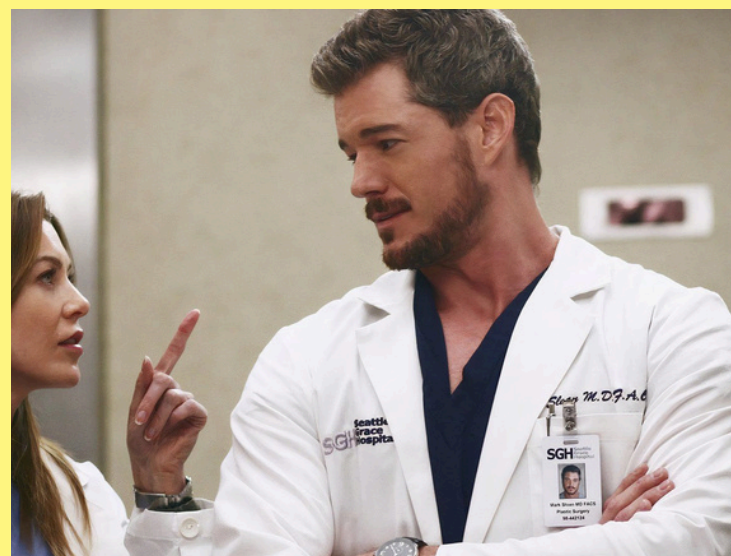
Twenty-something student of Sean's who makes a pass at him.

DR.

HANCOCK



A handsome doctor where Christy works. Treads the line between appropriate and inappropriate workplace behavior with Christy.



**“Fast, fun, and  
wholly engaging.”**  
**—Oustanding Screenplays**



# SERIES TONE

Each episode features Sean and Christy in various mundane and outrageous swinging scenarios with an emphasis on comical realism like *Swingtown*.

Similar to *Catastrophe*, the emotional focus of the series will be on Sean and Christy's relationship as they struggle to navigate parenthood, their marriage, and "the lifestyle."



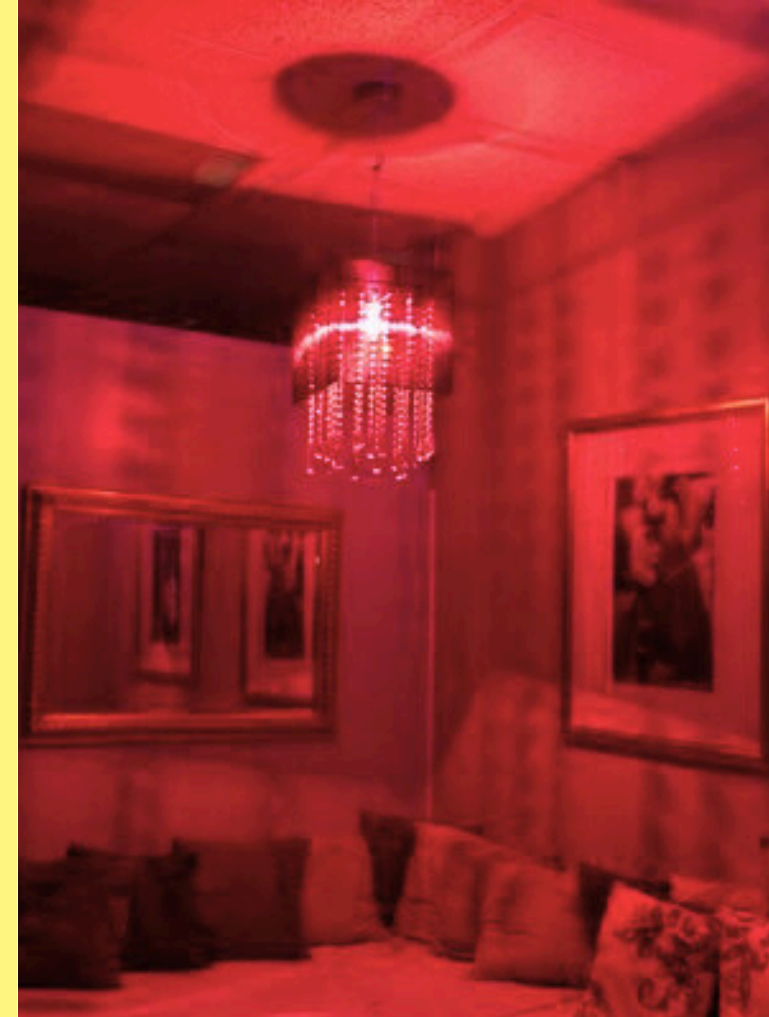




# EPISODES

**Format:** single-cam, serialized half-hour dramedy for streamers

Each episode of *The Pineapple Chronicles* will be a self-contained story that explores the mundane and outrageous aspects of the swinging lifestyle and also contributes to the larger character arcs of the season. The episodes will focus on the characters' relationships with each other as their swinging experiences bring new challenges and opportunities for growth.





# SEASON ONE

When Sean and Christy first enter "The Lifestyle," Christy loves it, but Sean is too nervous to enjoy his initial experiences. As the season progresses, with house parties and sex clubs, Sean gets really into it. At the same time, Christy starts to wonder if they've gone too far. Especially when they find a couple that wants to take their swinging relationship to the next level.





## SEASON 2

Sean and Christy take their swinging to another emotional level when they start having sex with Liz and Nils, a couple they've known for years. It goes great for a while, but then Sean starts to envy Christy's focus on Nils, and in a fit of jealousy, ends the friendship, and the swinging. Mostly.



## SEASON 3

Sean and Christy try a polyamorous relationship with their live-in nanny with disastrous results. Near to divorce, they end their relationship with the nanny--and their therapist—and quit swinging for good.



# SERIES OVERVIEW

## *The Dramatic Question:*

*Will swinging save Sean and Christy's marriage or destroy it?*

Sean and Christy start swinging thinking it will rekindle a much-needed sexual spark, and sometimes their experiences do jumpstart their sex drives and romantic feelings for each other. Other times, their encounters create or reveal more serious marital issues. Through the ups and downs of swinging, their relationship evolves and strengthens over the course of the series.





# CONTACT

## EMAIL

[jdmcelvaney@gmail.com](mailto:jdmcelvaney@gmail.com)

## MOBILE

678-314-0213

## MAILING ADDRESS

2337 29<sup>th</sup> Ave. South  
Seattle, WA. 98144

