



SILVER BANDITS

A Comedy Caper Screenplay
by Joel McElvaney





LOGLINE

A struggling actress whose aging grandparents are drowning in medical debt and about to lose their house decides to rob a bank to pay off the debt and save the family home.

SCRIPT SYNOPSIS

The film opens with struggling actress CHARLY bombing an audition for a role as a bank robber and losing her apartment. She goes to the home of doting, profane GRAM and absent-minded GRAMPS, but finds out they owe \$80k in medical debt and are weeks away from losing their home to a collection agency. With the help of theatre friend LILA (who has a secret crush on Charly) she disguises herself as Gram and goes to the collection agency to try to set up a payment plan for the debt, but is rejected.

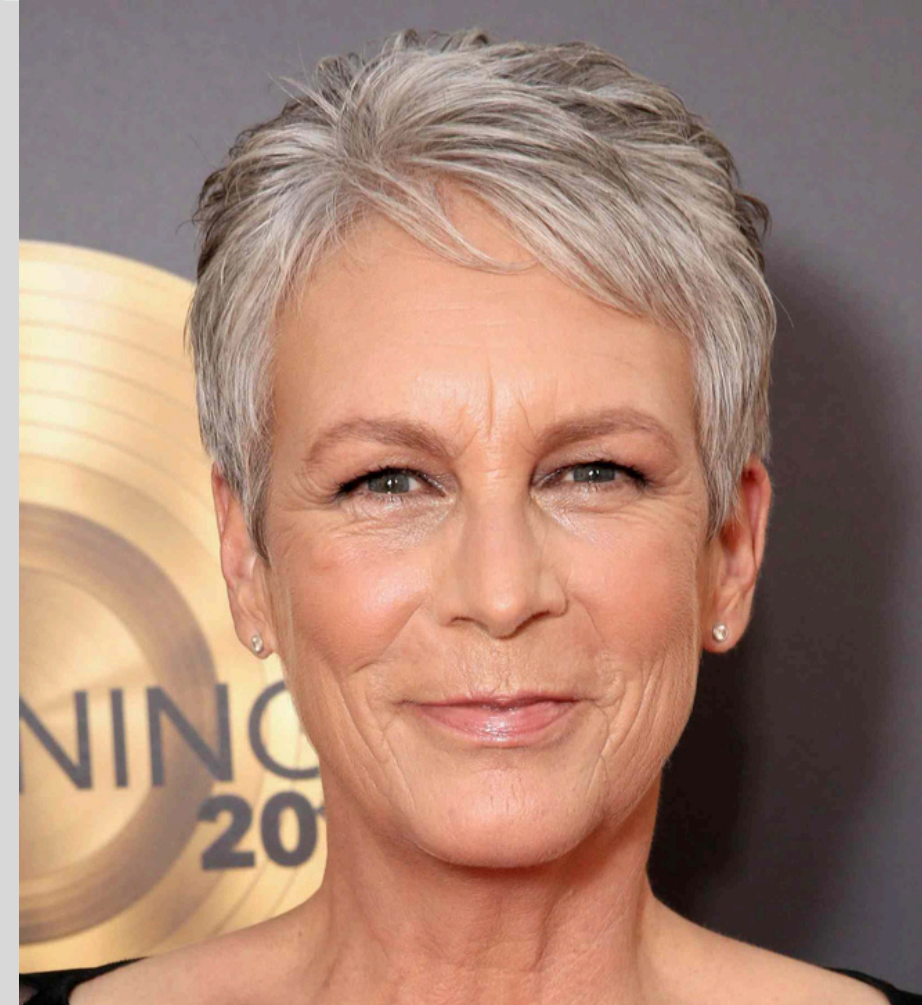
After seeing a news report about thieves robbing millionaire's mansions, Charly and Gram decide to rob a bank. Charly borrows two prop guns from the community theatre, disguises herself as an old woman, and with Gramps driving the getaway car, she and Gram rob a bank. Local news dubs them the "Silver Bandits." Needing more money, they rob a second bank and then a third, where a bank customer records Gram saying why they're robbing banks. In their getaway, Gramps has a mini stroke. He's rushed to the hospital, and Grams and Charly are thrown in jail.

Meanwhile, the video of Gram's answer in the bank goes viral and Lila starts a GoFundMe for Gram and that earns them enough to pay off their debt. Gramps recovers well from the stroke, and the police discover that Gram and Charly didn't use real weapons in their robberies. Public pressure forces the DA to accept a plea deal, and the court sentences Gram and Charly to fourteen months house arrest. Gramps gets a six-months. The three "do their time," Lila and Charly start dating, and a year after Gramps gets his ankle monitor removed, Gram, Charly and Gramps are sitting in a movie theatre watching Charly's film debut on the big screen - playing a bank robber.



Charly Wells

A struggling actress and caring, resourceful granddaughter who loves her grandparents dearly.



Gram

Charly's profane, whipsmart grandmother pushed to the brink by unexpected medical debt.

KEY CHARACTERS



Gramps

Charly's loving, absent-minded grandfather.



Lila

Charly's theatre friend and colleague with a secret crush on Charly.



FILM TONE

- Lighthearted
- Suspenseful
- Dramedy

LOCATIONS





FINAL WORD

FROM THE SCREENWRITER

While the impetus for the bank robberies is serious, there is plenty of humor in Charly's exploits with Gram and Gramps, virtually no violence in the script, and happy endings for all.

CONTACT

EMAIL

jdmcelvaney@gmail.com

MOBILE

678-314-0213

MAILING ADDRESS

2337 29th Ave. South
Seattle, WA. 98144

